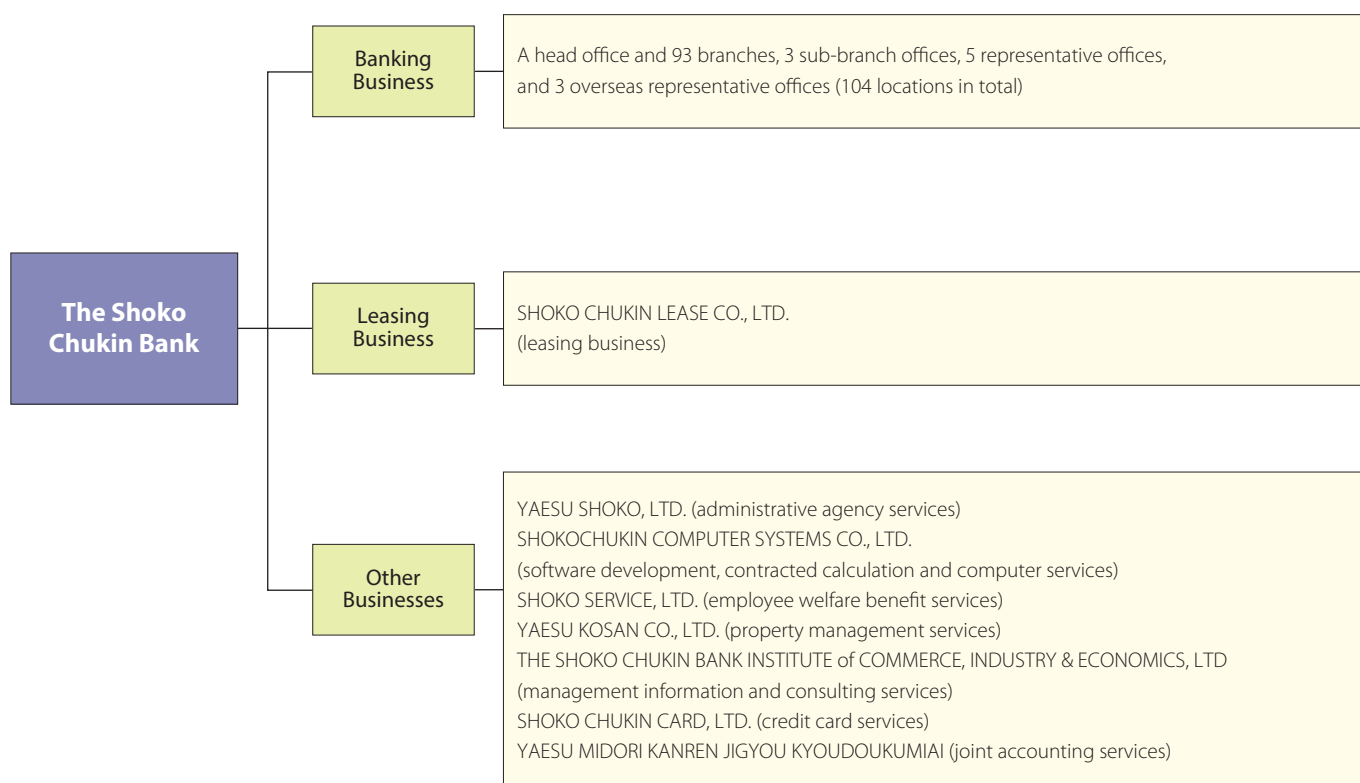


Business Activities

The Shoko Chukin Bank Group is comprised of the Shoko Chukin Bank and 8 subsidiary companies. In addition to its mainstay banking operations, the Group collectively provides a wide range of leasing and other financial services. A diagrammatic chart of the Shoko Chukin Bank Group's principal activities is presented as follows (As of June 30, 2015).



Subsidiaries

Subsidiaries (As of June 30, 2015)

Company Name	Address	Principal Business Activities	Date of Establishment	Paid-in Capital or Capital Subscription (Millions of Yen)	Percentage of Voting Rights Held by the Bank (%)	Percentage of Voting Rights Held by the Group (%)
YAESU SHOKO, LTD.	2-12-18 Shiba-Daimon, Minato-ku, Tokyo	Administrative agency services	Sep. 8, 1962	90	100.00	—
SHOKOCHUKIN COMPUTER SYSTEMS CO., LTD.	2-10-1 Misumicho, Higashi Murayama-shi, Tokyo	Software development, contracted calculation and computer services	Dec. 14, 1973	70	—	100.00
SHOKO SERVICE, LTD.	3-3-2 Kyobashi, Chuo-ku, Tokyo	Employee welfare benefit services	Nov. 25, 1982	32	62.50	37.50
YAESU KOSAN CO., LTD.	2-12-18 Shiba-Daimon, Minato-ku, Tokyo	Property management services	Jun. 22, 1972	35	100.00	—
THE SHOKO CHUKIN BANK INSTITUTE of COMMERCE, INDUSTRY & ECONOMICS, LTD	2-12-18 Shiba-Daimon, Minato-ku, Tokyo	Management information and consulting services	Dec. 10, 1974	80	23.08	76.92
SHOKO CHUKIN LEASE CO., LTD.	1-10-12 Ueno, Taito-ku, Tokyo	Leasing business	Oct. 8, 1982	1,000	100.00	—
SHOKO CHUKIN CARD CO., LTD.	2-12-18 Shiba-Daimon, Minato-ku, Tokyo	Credit card services	Jan. 22, 1991	70	100.00	—
YAESU MIDORI KANREN JIGYOU KYOUDOUKUMIAI	2-12-18 Shiba-Daimon, Minato-ku, Tokyo	Joint accounting services	Jun. 11, 1982	10	—	100.00