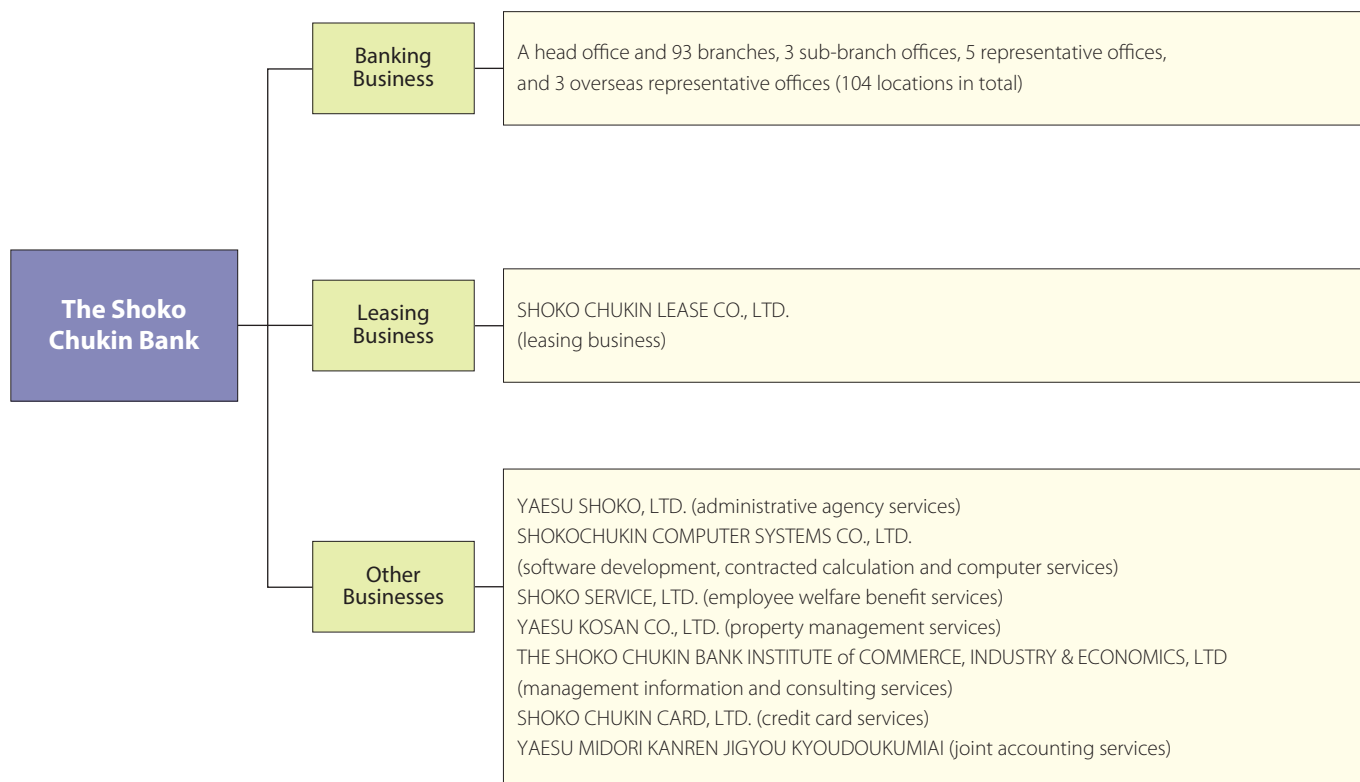


## Business Activities

The Shoko Chukin Bank Group is comprised of the Shoko Chukin Bank and 8 subsidiary companies. In addition to its mainstay banking operations, the Group collectively provides a wide range of leasing and other financial services. A diagrammatic chart of the Shoko Chukin Bank Group's principal activities is presented as follows (As of June 30, 2016).



## Subsidiaries

### Subsidiaries (As of June 30, 2016)

Company Name	Address	Principal Business Activities	Date of Establishment	Paid-in Capital or Capital Subscription (Millions of Yen)	Percentage of Voting Rights Held by the Bank (%)	Percentage of Voting Rights Held by the Group (%)
YAESU SHOKO, LTD.	2-12-18 Shiba-Daimon, Minato-ku, Tokyo	Administrative agency services	Sep. 8, 1962	90	100.00	—
SHOKOCHUKIN COMPUTER SYSTEMS CO., LTD.	2-10-1 Misumicho, Higashi Murayama-shi, Tokyo	Software development, contracted calculation and computer services	Dec. 14, 1973	70	—	100.00
SHOKO SERVICE, LTD.	3-3-2 Kyobashi, Chuo-ku, Tokyo	Employee welfare benefit services	Nov. 25, 1982	32	62.50	37.50
YAESU KOSAN CO., LTD.	2-12-18 Shiba-Daimon, Minato-ku, Tokyo	Property management services	Jun. 22, 1972	35	100.00	—
THE SHOKO CHUKIN BANK INSTITUTE of COMMERCE, INDUSTRY & ECONOMICS, LTD	2-12-18 Shiba-Daimon, Minato-ku, Tokyo	Management information and consulting services	Dec. 10, 1974	80	23.08	76.92
SHOKO CHUKIN LEASE CO., LTD.	1-10-12 Ueno, Taito-ku, Tokyo	Leasing business	Oct. 8, 1982	1,000	100.00	—
SHOKO CHUKIN CARD CO., LTD.	2-12-18 Shiba-Daimon, Minato-ku, Tokyo	Credit card services	Jan. 22, 1991	70	100.00	—
YAESU MIDORI KANREN JIGYOU KYOUDOUKUMIAI	2-12-18 Shiba-Daimon, Minato-ku, Tokyo	Joint accounting services	Jun. 11, 1982	10	—	100.00