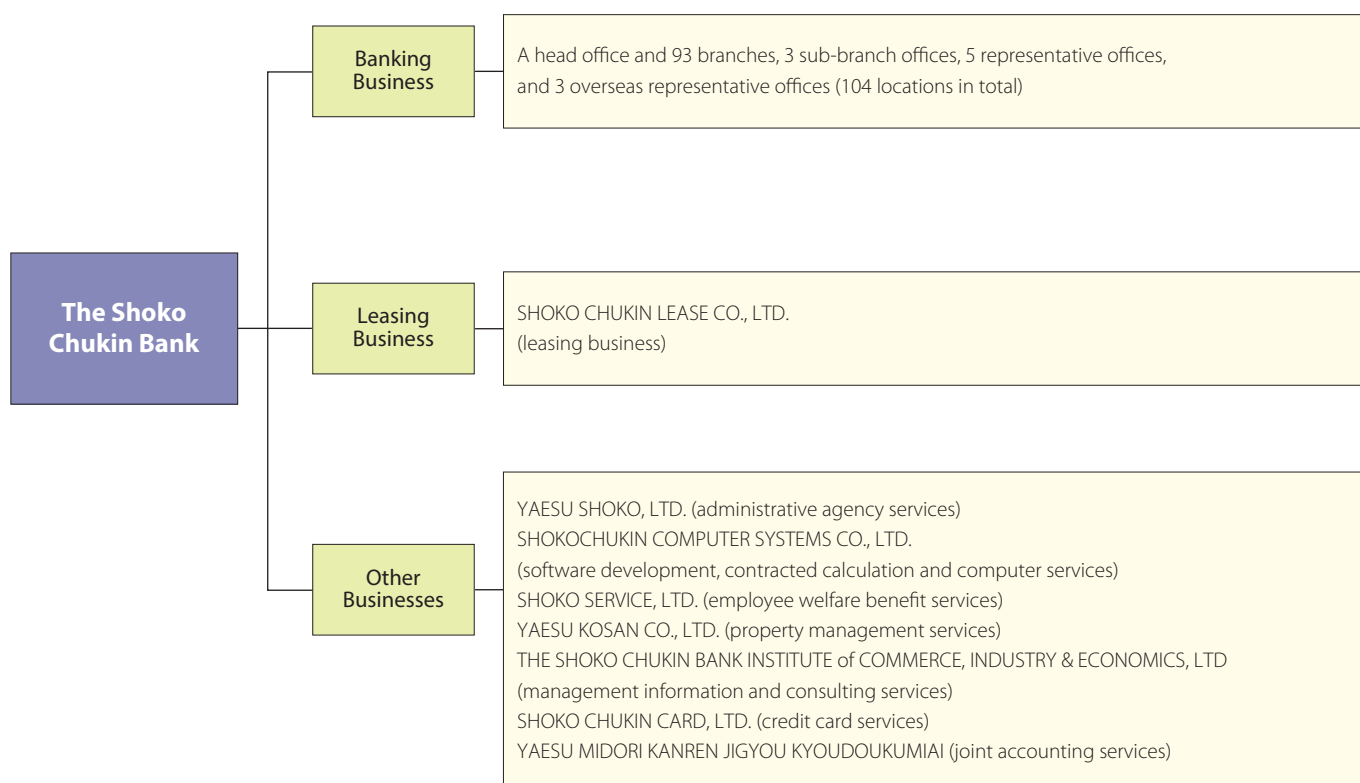


Business Activities

The Shoko Chukin Bank Group is comprised of the Shoko Chukin Bank and 8 subsidiary companies. In addition to its mainstay banking operations, the Group collectively provides a wide range of leasing and other financial services. A diagrammatic chart of the Shoko Chukin Bank Group's principal activities is presented as follows (As of June 30, 2017).



Subsidiaries

Subsidiaries (As of June 30, 2017)

| Company Name | Address | Principal Business Activities | Date of Establishment | Paid-in Capital or Capital Subscription (Millions of Yen) | Percentage of Voting Rights Held by the Bank (%) | Percentage of Voting Rights Held by the Group (%) |
|--|---|--|-----------------------|---|--|---|
| YAESU SHOKO, LTD. | 2-12-18 Shiba-Daimon, Minato-ku, Tokyo | Administrative agency services | Sep. 8, 1962 | 90 | 100.00 | — |
| SHOKOCHUKIN COMPUTER SYSTEMS CO., LTD. | 2-10-1 Misumicho, Higashi Murayama-shi, Tokyo | Software development, contracted calculation and computer services | Dec. 14, 1973 | 70 | — | 100.00 |
| SHOKO SERVICE, LTD. | 3-3-2 Kyobashi, Chuo-ku, Tokyo | Employee welfare benefit services | Nov. 25, 1982 | 32 | 62.50 | 37.50 |
| YAESU KOSAN CO., LTD. | 2-12-18 Shiba-Daimon, Minato-ku, Tokyo | Property management services | Jun. 22, 1972 | 35 | 100.00 | — |
| THE SHOKO CHUKIN BANK INSTITUTE of COMMERCE, INDUSTRY & ECONOMICS, LTD | 2-12-18 Shiba-Daimon, Minato-ku, Tokyo | Management information and consulting services | Dec. 10, 1974 | 80 | 23.08 | 76.92 |
| SHOKO CHUKIN LEASE CO., LTD. | 1-10-12 Ueno, Taito-ku, Tokyo | Leasing business | Oct. 8, 1982 | 1,000 | 100.00 | — |
| SHOKO CHUKIN CARD CO., LTD. | 2-12-18 Shiba-Daimon, Minato-ku, Tokyo | Credit card services | Jan. 22, 1991 | 70 | 100.00 | — |
| YAESU MIDORI KANREN JIGYOU KYOUDOUKUMIAI | 2-12-18 Shiba-Daimon, Minato-ku, Tokyo | Joint accounting services | Jun. 11, 1982 | 10 | — | 100.00 |