

## Business Activities

The Shoko Chukin Bank Group is comprised of the Shoko Chukin Bank and 9 subsidiary companies. In addition to its mainstay banking operations, the Group collectively provides a wide range of leasing and other financial services. A diagrammatic chart of the Shoko Chukin Bank Group's principal activities is presented as follows (As of March 31, 2023).

<b>Shoko Chukin Bank Group</b>	<b>Banking Business</b>	The Shoko Chukin Bank (Banking business) A head office and 93 branches, 3 sub-branch offices, 7 representative offices, and 3 overseas representative offices (106 locations in total)
	<b>Leasing Business</b>	SHOKO CHUKIN LEASE CO., LTD. (leasing business)
	<b>Other Businesses</b>	YAESU SHOKO, LTD. (administrative agency services) SHOKOCHUKIN COMPUTER SYSTEMS CO., LTD. (software development, contracted calculation and computer services) SHOKO SERVICE, LTD. (employee welfare benefit services) YAESU KOSAN CO., LTD. (property management services) THE SHOKO CHUKIN BANK INSTITUTE of COMMERCE, INDUSTRY & ECONOMICS, LTD (management information and consulting services) SHOKO CHUKIN CARD, LTD. (credit card services) YAESU MIDORI KANREN JIGYOU KYOUDOUKUMIAI (joint accounting services) Tsunagaru Mirai Fund (Silent Partnership) (Investment business)

## Subsidiaries

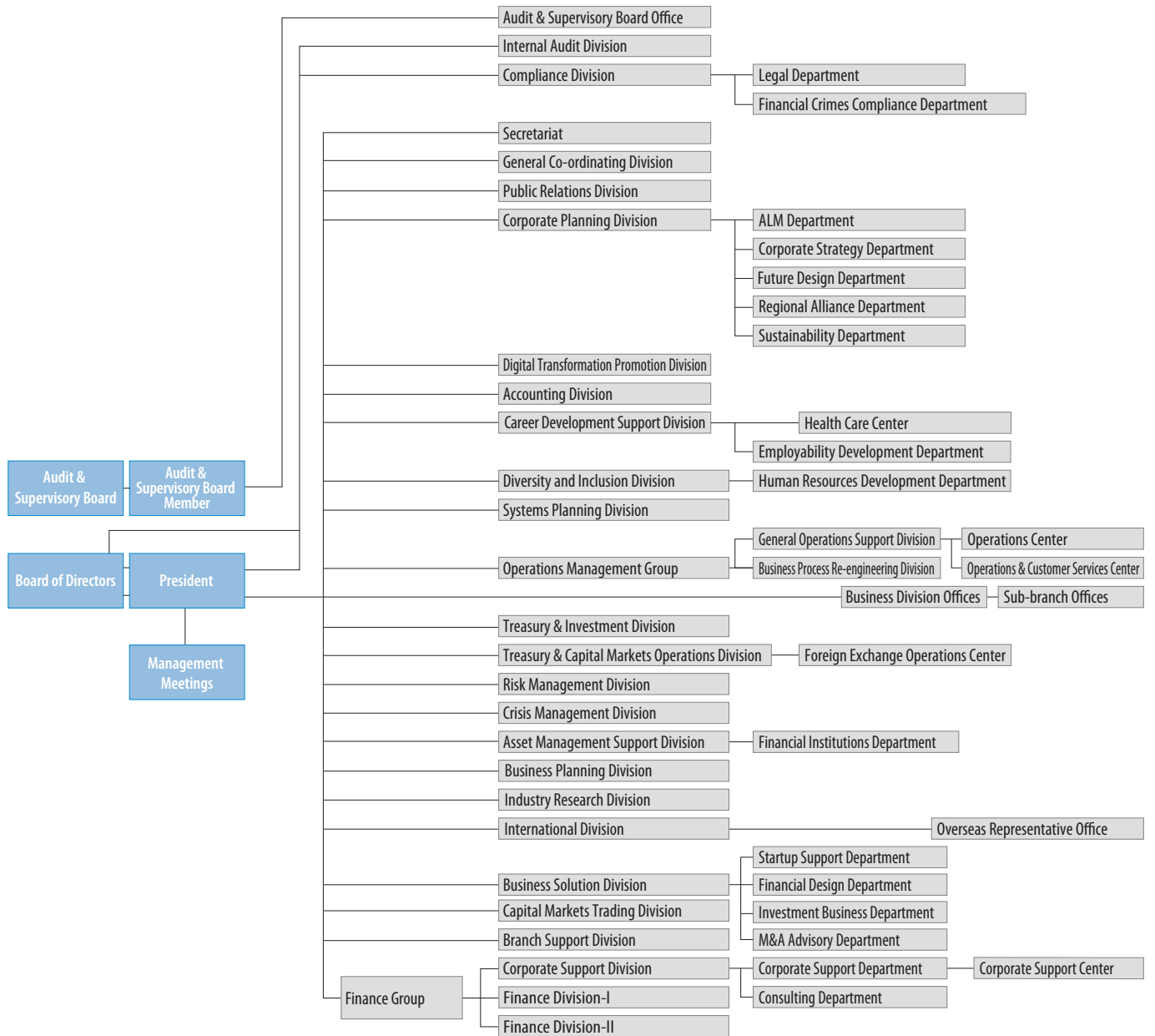
### Subsidiaries (As of March 31, 2023)

Company Name	Address	Principal Business Activities	Date of Establishment	Paid-in Capital or Capital Subscription (Millions of Yen)	Percentage of Voting Rights Held by the Bank (%)	Percentage of Voting Rights Held by the Group (%)
YAESU SHOKO, LTD.	2-12-18 Shiba-Daimon, Minato-ku, Tokyo	Administrative agency services	Sep. 8, 1962	90	100.00	—
SHOKOCHUKIN COMPUTER SYSTEMS CO., LTD.	2-10-1 Misumicho, Higashi Murayama-shi, Tokyo	Software development, contracted calculation and computer services	Dec. 14, 1973	70	—	100.00
SHOKO SERVICE, LTD.	2-12-18 Shiba-Daimon, Minato-ku, Tokyo	Employee welfare benefit services	Nov. 25, 1982	32	62.50	37.50
YAESU KOSAN CO., LTD.	2-12-18 Shiba-Daimon, Minato-ku, Tokyo	Property management services	Jun. 22, 1972	35	100.00	—
THE SHOKO CHUKIN BANK INSTITUTE of COMMERCE, INDUSTRY & ECONOMICS, LTD	2-12-18 Shiba-Daimon, Minato-ku, Tokyo	Management information and consulting services	Dec. 10, 1974	80	23.08	76.92
SHOKO CHUKIN LEASE CO., LTD.	1-10-12 Ueno, Taito-ku, Tokyo	Leasing business	Oct. 8, 1982	1,000	100.00	—
SHOKO CHUKIN CARD CO., LTD.	2-12-18 Shiba-Daimon, Minato-ku, Tokyo	Credit card services	Jan. 22, 1991	70	100.00	—
YAESU MIDORI KANREN JIGYOU KYOUDOUKUMIAI	2-12-18 Shiba-Daimon, Minato-ku, Tokyo	Joint accounting services	Jun. 11, 1982	10	—	100.00



# >>> Organization

## Organization Chart



(As of April 1, 2022)

## Stock Information

- **Number of Authorized Shares (As of March 31, 2023)**  
**Common stock** 4,000,000,000 shares  
**Crisis response reserve stock** 10 shares
- **Number of Issued and Outstanding Shares (As of March 31, 2023)**  
 Common stock 2,186,531,448 shares
- **End of Each Accounting Term**  
 March 31
- **Record Dates**  
 Ordinary General Meeting of Shareholders March 31  
 Date for Determining Shareholders of Record for the Distribution of Accounting Term-End Dividends March 31  
 Record dates for other matters shall be determined individually and publicly announced in advance when required
- **Period during which the Ordinary General Meeting of Shareholders Shall Be Held**  
 Late June
- **Number of Shares per Trading Unit**  
 Common stock 1,000 shares  
 Crisis response reserve stock 1 share
- **Method of Public Notifications**  
 Public notifications are made by electronic means. In the event that notifications cannot

be made by electronic means due to unavoidable circumstances and reasons, notifications shall be published in the *Nihon Keizai Shimbun*.

## Matters Relating to the Administration of Shares

- **Administrator of the Shareholder Register**  
 Mitsubishi UFJ Trust and Banking Corporation  
 1-4-5, Marunouchi, Chiyoda-ku, Tokyo
- **Handling Office**  
 Mitsubishi UFJ Trust and Banking Corporation  
 Securities Agency Division  
 1-4-5, Marunouchi, Chiyoda-ku, Tokyo
- **Contact**  
 Mitsubishi UFJ Trust and Banking Corporation  
 Securities Agency Division  
 Tel: 0120-232-711 (Toll free)  
 9:00 to 17:00 Tokyo local time (Excluding Saturdays, Sundays and public holidays)
- **Mailing Address**  
 Mitsubishi UFJ Trust and Banking Corporation  
 Securities Agency Division  
 Shin-Tokyo Post Office Box No. 29  
 137-8081
- **Agencies**  
 All Mitsubishi UFJ Trust and Banking Corporation branches nationwide

## Shareholder Eligibility

- Under the Shoko Chukin Bank Limited Act, the primary mission of the Shoko Chukin Bank is to serve as a stable source of finance to small and medium-sized enterprises. As a government-affiliated financial institution, the Bank's shareholders are defined and stipulated under Article 6 of the aforementioned Shoko Chukin Bank Limited Act. In addition to the government, other joint subscribers to the Bank's capital include SME cooperatives and their SME shareholder members.
- While it is the responsibility of the head office and domestic branches of Mitsubishi UFJ Trust and Banking Corporation to receive and process requests for the registration and transfer of the Bank's shares, please be advised that said requests may be denied subject to the screening of shareholder eligibility.

## Message to all SME Cooperatives

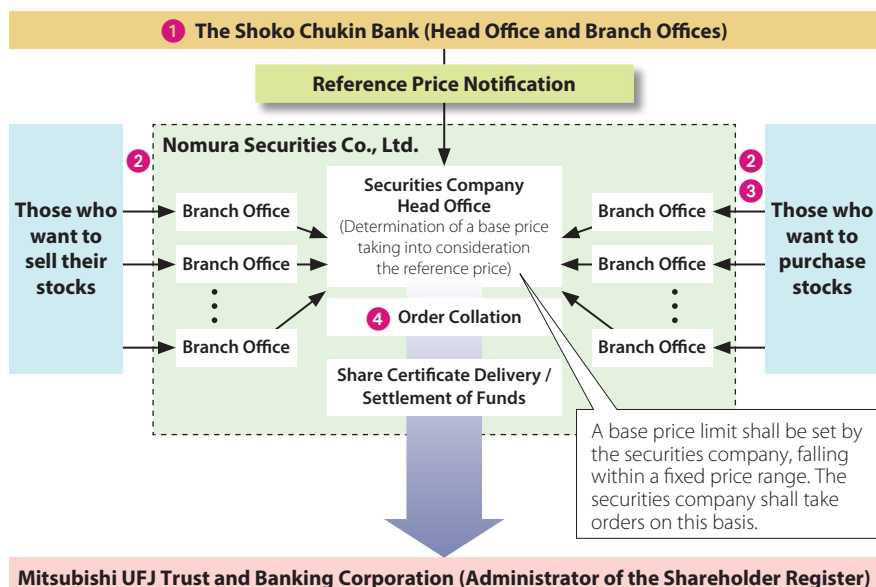
- When a cooperative member applies for loans at the Shoko Chukin Bank, certificate of membership of the cooperative is required. We ask for your understanding on this matter.

## The Purchase and Sale of Shares

Shares of the Shoko Chukin Bank can be purchased and sold utilizing the following methods.

- (1) Negotiated purchase and sale  
 Negotiated purchase and sales with other SME cooperatives or their SME shareholder members
- (2) Securities company over-the-counter share purchase and sale  
 The head office and domestic branches of Nomura Securities Co., Ltd. shall receive and process over-the-counter purchase and sale orders with respect to the Bank's shares. Over-the-counter purchases and sales shall be affected by collating the aforementioned orders.

### The mechanism and structure for securities company over-the-counter purchase and sale of the Bank's shares



### 1 Notification of Share Purchase and Sale Mechanism

- The Shoko Chukin Bank shall notify SME cooperatives and their SME shareholder members of the mechanism relating to the acquisition of shares. Advice shall also be provided with regard to such cautionary items as restrictions on the eligibility of shareholders.

### 2 The Taking of Orders

- Orders for the purchase and sale of shares shall be accepted at the head office and domestic branches of Nomura Securities Co., Ltd. (Postal applications also accepted).
- With regard to the order price, a base price limit shall be set to fall within a fixed price range.  
 Note: Nomura Securities Co., Ltd. shall determine the base price taking into consideration the reference price set by the Shoko Chukin Bank based on the opinions of specialists.
- Nomura Securities Co., Ltd. shall provide details of the base price and recent transaction prices.
- Eligibility with regard to share acquisition orders shall be restricted to SME cooperatives and their SME shareholders members, who are in turn shareholders of the Shoko Chukin Bank.

### 3 Certification of Shareholder Eligibility

- In placing an order to acquire shares, the intended purchaser shall submit to Nomura Securities Co., Ltd. a "Certificate of Shareholder Eligibility," designated by the Shoko Chukin Bank, together with supporting documentation (Certificate of Registration in the case of an SME cooperative; Certificate of Registration as an SME member and a copy of the Members' Register in the case of an SME shareholder member). Submission of the aforementioned documentation is in principle not required in the case of intended purchasers whose details are already recorded in the shareholders' register.

### 4 Order Collation

- The collation of sale and purchase orders shall be undertaken on the 15th day of each month (in the event the 15th is not a business day, collation shall be undertaken on the next business day). The closing date for sale orders shall be 14 business days prior to the collation date and five business days prior to the collation date for purchase orders.
- Both a price and time priority (Note) shall be determined. However, for order collation from February 2020 onward, we have followed the stock exchange system, and adopted the "stop allocation method" if the price reaches the upper or lower limit of the range.  
 Note: Purchase orders with a higher price shall have priority. Sale orders with a lower price shall have priority. Orders with the same price shall be prioritized in the order in which they are received.
- Stock trading commission rates shall be equivalent to the rates applied by Nomura Securities Co., Ltd. with respect to the purchase and sale of publicly listed shares.

## History

June	1936	The Shoko Chukin Bank Act enforced
November	1936	Inaugural general meeting held; Toyotaro Yuki, President of the Industrial Bank of Japan, Limited appointed as the Bank's first president
December	1936	Registration of establishment completed; Operations commenced; Network established comprising head office in Marunouchi, Kojimachi-ku, Tokyo and six branches including an office in Sapporo
March	1937	First series interest-bearing debentures issued
July	1940	First series discount debentures issued
August	1952	Establishment of a nationwide branch network encompassing every prefecture in Japan completed
December	1962	Construction of a new head office in Yaesu, Chuo-ku, Tokyo completed
May	1973	Foreign currency loan operations commenced
June	1985	The Shoko Chukin Bank Limited Act revised (perpetuation of the Bank by abolishing the initial 50-year term of existence)
August	1985	New York Representative Office established
February	1988	All-Japan Youth Kai launched
November	1990	Hong Kong Representative Office established
January	1995	The Great Hanshin Awaji Earthquake Task Force established
September	2003	Sales of certificates including discount bonds ended
March	2005	Shanghai Representative Office established
February	2006	New time deposit (currently "my harvest") operations commenced
June	2006	The Administrative Reform Promotion Law (The Law Concerning the Promotion of Administrative Reform for the Purpose of Realizing Small and Efficient Government) enforced, calling for the complete privatization of the Shoko Chukin Bank over a period of approximately five to seven years commencing October 2008
February	2007	Individual annuity and personal pension insurance operations commenced at certain branches
April	2007	Testamentary trust and estate liquidation operations commenced at certain branches
May	2007	The Shoko Chukin Bank Limited Act approved, stipulating the position, role and scope of operations of the Shoko Chukin Bank after commencing its transition to a new structure in October 2008 (company pursuant to a special act)
May	2008	Investment trust operations commenced at certain branches
October	2008	The Shoko Chukin Bank Limited Act enforced (transition from a jointly owned financial institution to a joint-stock company)
October	2008	YAESU SHOKO, LTD., SHOKOCHUKIN COMPUTER SYSTEMS CO., LTD., SHOKO SERVICE, LTD., YAESU KOSAN CO., LTD., JAPAN INSTITUTE OF COMMERCE, INDUSTRY AND ECONOMIC, LTD. (currently THE SHOKO CHUKIN BANK INSTITUTE OF COMMERCE, INDUSTRY & ECONOMICS, LTD.), JAPAN SHOKO LEASE CO., LTD (currently SHOKO CHUKIN LEASE CO., LTD.), and SHOCHU CARD CO., LTD. (currently SHOKO CHUKIN CARD CO., LTD.) converted to consolidated subsidiaries
October	2008	The Shoko Chukin Bank designated under the law as a government-appointed financial institution charged with the responsibility of undertaking special responses should a crisis occur
June	2009	The Shoko Chukin Bank Limited Act revised (newly established provision for the additional government funding, while postponing the starting point for complete-privatization deadline by three years and a half)
July	2009	The Shoko Chukin Bank posted ¥150.0 billion for crisis response reserve
March	2011	Tohoku Pacific Earthquake Task Force (name changed to Great East Japan Earthquake Task Force on May 13, 2011) established
May	2011	The Shoko Chukin Bank Limited Act revised (postponement of starting point for complete-privatization deadline by three years)
September	2012	Bangkok Representative Office established
November	2012	Revitalization Support Program established
December	2012	Issuance of new Warisho, Rissho and Rissho Wide ended
May	2015	The Shoko Chukin Bank Limited Act revised (the government will, for the time being, hold the shares as necessary to ensure adequate implementation of crisis response measures while maintaining the policy for complete privatization)
December	2016	The Crisis Response Measures Management Department was newly established in the Co-operative Finance Planning Division (currently Business Planning Division) (Reorganized as the Crisis Management Division in October 2017, as an independent organization at Headquarters)
October	2017	Reorganized the Compliance Department into the Compliance Division as an independent organization at Headquarters
June	2018	Restructured organizations at Headquarters (Established the Finance Group, etc. as the Management Group. Established the Audit & Supervisory Department. Established the Corporate Strategy Department, IT Strategy Department (incorporated into the Digital Transformation Promotion Division as an independent group in April 2021), and Regional Cooperation Department in the Corporate Planning Division, etc.)
June	2018	Introduced mandated executive officer system
April	2019	Diversity and Inclusion Department was newly established in the Personnel Division (Reorganized as the Diversity and Inclusion Division in April 2022, as an independent organization at Headquarters)
April	2020	Risk Management Division established. Financial Crimes Compliance Department established in the Compliance Division. Future Design Department established in the Corporate Planning Division.
April	2021	Established the M&A Advisory Department, etc. in the Business Solution Division
April	2022	Sustainability Department was newly established in the Corporate Planning Division. Reorganized the Personnel Division into the Career Development Support Division
October	2022	Startup Support Department and Financial Design Department established in the Business Solution Division. Consulting Department established in the Corporate Support Division
April	2023	Restructured organizations at Headquarters (Established the Operations Management Group as the Management Group. Reorganized the Co-operative Finance Planning Division as the Business Planning Division. Reorganized the Finance Management Department and the Finance Management Center as the Corporate Support Department and the Corporate Support Center, etc.)
June	2023	The Shoko Chukin Bank Limited Act revised (requiring the government to sell all its shares in the Bank and revising the Bank's scope of business)

# >>> The Shoko Chukin Bank Network

(As of June 30, 2023)

<b>Head Office</b>	2-10-17, Yaesu, Chuo-ku, Tokyo 104-0028, Japan	+81-3-3272-6111
<b>Hokkaido</b>		
<b>Sapporo Office</b>	3-1-20, Kita-2jonishi, Chuo-ku, Sapporo-shi, Hokkaido 060-0002, Japan	+81-11-241-7231
<b>Hakodate Office</b>	33-1, Goryokaku-cho, Hakodate-shi, Hokkaido 040-0001, Japan	+81-138-35-5022
<b>Obihiro Office</b>	9-23, Nishi-3jomnami, Obihiro-shi, Hokkaido 080-0013, Japan	+81-155-23-3185
<b>Kushiro Representative Office</b>	1-1-1, Omachi, Kushiro-shi, Hokkaido 085-0847, Japan	+81-154-42-0671
<b>Asahikawa Office</b>	9-1703-81, Sjdori, Asahikawa-shi, Hokkaido 070-0035, Japan	+81-166-26-2181
<b>Tohoku</b>		
<b>Aomori Office</b>	2-1-7, Nagashima, Aomori-shi, Aomori 030-0861, Japan	+81-17-734-5411
<b>Hachinohe Office</b>	43-1, Youka-machi, Hachinohe-shi, Aomori 031-0086, Japan	+81-178-45-8811
<b>Morioka Office</b>	3-4-6, Chuodori, Morioka-shi, Iwate 020-0021, Japan	+81-19-622-4185
<b>Sendai Office</b>	2-10-30, Chuo, Aoba-ku, Sendai-shi, Miyagi 980-0021, Japan	+81-22-225-7411
<b>Akita Office</b>	2-4-19, Nakadori, Akita-shi, Akita 010-0001, Japan	+81-18-833-8531
<b>Yamagata Office</b>	2-1, Saiwai-cho, Yamagata-shi, Yamagata 990-0038, Japan	+81-23-632-2111
<b>Sakata Office</b>	2-6-22, Naka-machi, Sakata-shi, Yamagata 998-0044, Japan	+81-234-24-3922
<b>Fukushima Office</b>	11-5, Mikawakita-machi, Fukushima-shi, Fukushima 960-8054, Japan	+81-24-526-1201
<b>Aizuwakamatsu Representative Office</b>	6-5, Minamisengoku-machi, Aizuwakamatsu-shi, Fukushima 965-0816, Japan	+81-242-26-2617
<b>Kanto-Koshinetsu</b>		
<b>Mito Office</b>	3-5-7, Minami-machi, Mito-shi, Ibaraki 310-0021, Japan	+81-29-225-5151
<b>Utsunomiya Office</b>	1-1-15, Nishi, Utsunomiya-shi, Tochigi 320-0861, Japan	+81-28-633-8191
<b>Ashikaga Office</b>	2-2751, Tori, Ashikaga-shi, Tochigi 326-0814, Japan	+81-284-21-7131
<b>Maebashi Office</b>	1-1-11, Hon-machi, Maebashi-shi, Gunma 371-0023, Japan	+81-27-224-8151
<b>Saitama Office</b>	4-25-13, Kishi-cho, Urawa-ku, Saitama-shi, Saitama 330-0064, Japan	+81-48-822-5151
<b>Kumagaya Office</b>	2-95, Hon-cho, Kumagaya-shi, Saitama 360-0042, Japan	+81-48-525-3751
<b>Chiba Office</b>	1-4-3, Shin-chiba, Chuo-ku, Chiba-shi, Chiba 260-0031, Japan	+81-43-248-2345
<b>Matsudo Office</b>	1846-2, Matsudo, Matsudo-shi, Chiba 271-0092, Japan	+81-47-365-4111
<b>Hachioji Office</b>	2-5, Yokoyama-cho, Hachioji-shi, Tokyo 192-0081, Japan	+81-42-646-3131
<b>Ueno Office</b>	1-10-12, Ueno, Taito-ku, Tokyo 110-0005, Japan	+81-3-3834-0111
<b>Omori Office</b>	6-26-3, Minamioji, Shinagawa-ku, Tokyo 140-0013, Japan	+81-3-3763-1251
(* Moved to the above address on March 6, 2023)		
<b>Keihinjima Sub-branch</b>	2-10-2, Keihinjima, Ota-ku, Tokyo 143-0003, Japan	+81-3-3799-0331
<b>Oshiage Office</b>	3-10-8, Narihira, Sumida-ku, Tokyo 130-0002, Japan	+81-3-3624-1161
<b>Urayasu Sub-branch</b>	2-1-6 Tekkadori, Urayasu-shi, Chiba 279-0025, Japan	+81-47-355-8011
<b>Shinjuku Office</b>	(Inside the Fukutoshin Business Division) 6-11-3, Nishishinjuku, Shinjuku-ku, Tokyo 160-0023, Japan	+81-3-3340-1551
<b>Fukagawa Office</b>	5-11-17, Kiba, Koto-ku, Tokyo 135-0042, Japan	+81-3-3642-7131
<b>Tokyo Office</b>	2-12-18, Shibadaimon, Minato-ku, Tokyo 105-0012, Japan	+81-3-3437-1231
<b>Ikebukuro Office</b>	1-21-10, Minamiikebukuro, Toshima-ku, Tokyo 171-0022, Japan	+81-3-3988-6311
<b>Shibuya Office</b>	(Inside the Fukutoshin Business Division) 6-11-3, Nishishinjuku, Shinjuku-ku, Tokyo 160-0023, Japan	+81-3-3340-1551
<b>Kanda Office</b>	(Inside the Head Office Business Division) 2-10-17, Yaesu, Chuo-ku, Tokyo 104-0028, Japan	+81-3-3272-6111
<b>Shinkiba Office</b>	(Inside the Fukagawa Office) 5-11-17, Kiba, Koto-ku, Tokyo 135-0042, Japan	+81-3-3642-7131
<b>Shinkiba Office</b>	1-18-6, Shinkiba, Koto-ku, Tokyo 136-0082, Japan	+81-3-5569-1711
(* Deposits and other counter operations consolidated with the Fukagawa Office, operated as a Shinkiba Office)		
<b>Yokohama Office</b>	(Inside the Kanagawa Business Division) 4-40, Kitanakadori, Naka-ku, Yokohama-shi, Kanagawa 231-0003, Japan	+81-45-201-3952
<b>Kawasaki Office</b>	(Inside the Kanagawa Business Division) 4-40, Kitanakadori, Naka-ku, Yokohama-shi, Kanagawa 231-0003, Japan	+81-45-201-3952
<b>Yokohama-Nishiguchi Office</b>	(Inside the Kanagawa Business Division) 4-40, Kitanakadori, Naka-ku, Yokohama-shi, Kanagawa 231-0003, Japan	+81-45-201-3952
<b>Sagamihara Representative Office</b>	4-3-14, Sagamihara, Chuo-ku, Sagamihara-shi, Kanagawa 252-0231, Japan	+81-42-786-6230
<b>Niigata Office</b>	2-4-4, Higashiodori, Chuo-ku, Niigata-shi, Niigata 950-0087, Japan	+81-25-255-5111
<b>Nagaoka Office</b>	1-2-10, Jonai-cho, Nagaoka-shi, Niigata 940-0061, Japan	+81-258-35-2121
<b>Kofu Office</b>	2-2-1, Marunouchi, Kofu-shi, Yamanashi 400-0031, Japan	+81-55-233-1161
<b>Nagano Office</b>	1483-11, Nishitsuruu-machi, Nagano-shi, Nagano 380-0814, Japan	+81-26-234-0145
<b>Suwa Office</b>	1-14-6, Ote, Suwa-shi, Nagano 392-0026, Japan	+81-266-52-6600
<b>Matsumoto Office</b>	2-1-27, Chuo, Matsumoto-shi, Nagano 390-0811, Japan	+81-263-35-6211

<b>Tokai</b>		
<b>Gifu Office</b>	9-16, Wakamiya-cho, Gifu-shi, Gifu 500-8828, Japan	+81-58-263-9191
<b>Takayama Representative Office</b>	5-1, Tenman-machi, Takayama-shi, Gifu 506-0025, Japan	+81-577-32-3353
<b>Shizuoka Office</b>	6-3, Oute-machi, Aoi-ku, Shizuoka-shi, Shizuoka 420-0853, Japan	+81-54-254-4131
<b>Hamamatsu Office</b>	133-1, Tokiwa-cho, Naka-ku, Hamamatsu-shi, Shizuoka 430-0917, Japan	+81-53-454-1521
<b>Numazu Office</b>	6-5, Yoneyama-cho, Numazu-shi, Shizuoka 410-0046, Japan	+81-55-920-5000
<b>Atsuta Office</b>	(Inside the Nagoya Office) 3-23-18, Nishiki, Naka-ku, Nagoya-shi, Aichi 460-0003, Japan	+81-52-951-7581
<b>Nagoya Office</b>	3-23-18, Nishiki, Naka-ku, Nagoya-shi, Aichi 460-0003, Japan	+81-52-951-7581
<b>Toyohashi Office</b>	3-71-2, Matsuba-cho, Toyohashi-shi, Aichi 440-0897, Japan	+81-532-52-0221
<b>Tsu Office</b>	4-254-1, Sakae-machi, Tsu-shi, Mie 514-0004, Japan	+81-59-228-4155
<b>Yokkaichi Office</b>	1-3-20, Unomori, Yokkaichi-shi, Mie 510-0074, Japan	+81-59-351-4871
<b>Hokuriku</b>		
<b>Toyama Office</b>	6-11, Sakurabashidori, Toyama-shi, Toyama 930-0004, Japan	+81-76-444-5121
<b>Takaoka Office</b>	2-6, Marunouchi, Takaoka-shi, Toyama 933-0912, Japan	+81-766-25-5431
<b>Kanazawa Office</b>	3-1-25, Honda-machi, Kanazawa-shi, Ishikawa 920-0964, Japan	+81-76-221-6141
<b>Fukui Office</b>	3-14-9, Ote, Fukui-shi, Fukui 910-0005, Japan	+81-776-23-2090
<b>Kinki</b>		
<b>Otsu Office</b>	1-2-22, Hamaotsu, Otsu-shi, Shiga 520-0047, Japan	+81-77-522-6791
<b>Hikone Office</b>	9-3, Asahi-machi, Hikone-shi, Shiga 522-0073, Japan	+81-749-24-3831
<b>Kyoto Office</b>	159-1, Ayanokoji Dori Karasuma Nishi-iru Dojisha-cho, Shimogyo-ku, Kyoto-shi, Kyoto 600-8421, Japan	+81-75-361-1120
<b>Osaka Office</b>	1-7-13, Awaza, Nishi-ku, Osaka-shi, Osaka 550-0011, Japan	+81-6-6532-0309
<b>Sakai Office</b>	2-1-2, Ryujinbashi-cho, Sakai-ku, Sakai-shi, Osaka 590-0972, Japan	+81-72-232-9441
[ The Sakai Office will be relocated to the address below on September 4, 2023. The telephone number will remain unchanged. ]		
<b>Umeda Office</b>	(Inside the Osaka Office) 1-7-13, Awaza, Nishi-ku, Osaka-shi, Osaka 550-0011, Japan	+81-6-6532-0309
<b>Senba Office</b>	1-18-17, Minamisenba, Chuo-ku, Osaka-shi, Osaka 542-0081, Japan	+81-6-6261-8431
<b>Minoo Senba Office</b>	(Inside the Osaka Office) 1-7-13, Awaza, Nishi-ku, Osaka-shi, Osaka 550-0011, Japan	+81-6-6532-0309
<b>Minoo Senba Office</b>	2-5-55, Senbahiigashi, Minoo-shi, Osaka 562-0035, Japan	+81-72-729-9181
(* Deposits and other counter operations consolidated with the Osaka Office, operated as a Minoo Senba Office)		
<b>Higashiosaka Office</b>	2-1-32, Nagatanaka, Higashiosaka-shi, Osaka 577-0013, Japan	+81-6-6746-1221
<b>Kobe Office</b>	111, Ito-machi, Chuo-ku, Kobe-shi, Hyogo 650-0032, Japan	+81-78-391-7541
<b>Himeji Office</b>	111, Soushahon-machi, Himeji-shi, Hyogo 670-0015, Japan	+81-79-223-8431
<b>Amagasaki Office</b>	5-19-8, Higashinaniwa-cho, Amagasaki-shi, Hyogo 660-0892, Japan	+81-6-6481-7501
<b>Nara Office</b>	4-281-1, Hayashikoji-cho, Nara-shi, Nara 630-8115, Japan	+81-742-30-1051
<b>Wakayama Office</b>	2-1, Juban-cho, Wakayama-shi, Wakayama 640-8152, Japan	+81-73-432-1281
<b>Chugoku</b>		
<b>Tottori Office</b>	2-218, Katahara, Tottori-shi, Tottori 680-0023, Japan	+81-857-22-3171
<b>Yonago Office</b>	168, Higashi-cho, Yonago-shi, Tottori 683-0067, Japan	+81-859-34-2711
<b>Matsue Office</b>	210, Tono-machi, Matsue-shi, Shimane 690-0887, Japan	+81-852-23-3131
<b>Hamada Representative Office</b>	2886, Takezako-cho, Hamada-shi, Shimane 697-0015, Japan	+81-855-23-3033
<b>Okayama Office</b>	4-1, Banzan-cho, Kita-ku, Okayama-shi, Okayama 700-0818, Japan	+81-86-225-1131
<b>Hiroshima Office</b>	2-1-2, Ote-machi, Naka-ku, Hiroshima-shi, Hiroshima 730-0051, Japan	+81-82-248-1151
<b>Fukuyama Office</b>	1-1-30, Konan-cho, Fukuyama-shi, Hiroshima 720-0814, Japan	+81-84-922-6830
<b>Hiroshima Seibu Office</b>	1-14-1, Shoko Center, Nishi-ku, Hiroshima-shi, Hiroshima 733-0833, Japan	+81-82-277-5421
<b>Shimonoseki Office</b>	1-1-13, Hosoe-cho, Shimonoseki-shi, Yamaguchi 750-0016, Japan	+81-83-223-1151
<b>Tokuyama Office</b>	1-26, Minamiginza, Shunan-shi, Yamaguchi 745-0033, Japan	+81-834-21-4141
<b>Shikoku</b>		
<b>Tokushima Office</b>	2-30, Nishisenba-cho, Tokushima-shi, Tokushima 770-0901, Japan	+81-88-623-0101
<b>Takamatsu Office</b>	1-3-8, Kawara-machi, Takamatsu-shi, Kagawa 760-0052, Japan	+81-87-821-6145
<b>Matsuyama Office</b>	3-3-8, Chifune-machi, Matsuyama-shi, Ehime 790-0001, Japan	+81-89-921-9151
<b>Kouchi Office</b>	4-2-46, Hon-machi, Kouchi-shi, Kouchi 780-0870, Japan	+81-88-822-4481

Kyushu/Okinawa		
● Fukuoka Office	1-13-21, Tenjin, Chuo-ku, Fukuoka-shi, Fukuoka 810-0001, Japan	+81-92-712-6551
■ Fukuoka Distribution Center Sub-branch	1-7-1, Tanotsu, Higashi-ku, Fukuoka-shi, Fukuoka 813-0034, Japan	+81-92-712-6551
[ * Over-the-counter operation was integrated into the Fukuoka Office, and this sub-branch operates the ATMs only. ]		
● Kitakyushu Office	3-8-1, Asano, Kokurakita-ku, Kitakyushu-shi, Fukuoka 802-0001, Japan	+81-93-533-9567
(Moved to the above address on May 15, 2023)		
● Kurume Office	42-21, Higashi-machi, Kurume-shi, Fukuoka 830-0032, Japan	+81-942-35-3381
● Saga Office	1-6-23, Ekimaechuo, Saga-shi, Saga 840-0801, Japan	+81-952-23-8121
● Nagasaki Office	2-13, Doza-machi, Nagasaki-shi, Nagasaki 850-0841, Japan	+81-95-823-6241
● Sasebo Office	4-21, Tokiwa-cho, Sasebo-shi, Nagasaki 857-0053, Japan	+81-956-23-8141
● Kumamoto Office	2-23, Joto-machi, Chuo-ku, Kumamoto-shi, Kumamoto 860-0846, Japan	+81-96-352-6184
● Oita Office	2-1-6, Miyako-machi, Oita-shi, Oita 870-0034, Japan	+81-97-534-4157
● Miyazaki Office	1-10, Nishikimachi, Miyazaki-shi, Miyazaki 880-0811, Japan	+81-985-24-1711
● Kagoshima Office	17-24, Nishisengoku-cho, Kagoshima-shi, Kagoshima 892-0847, Japan	+81-99-223-4101
● Naha Office	2-22-10, Kumoji, Naha-shi, Okinawa 900-0015, Japan	+81-98-866-0196

Overseas		
● New York	527 Madison Avenue, 17th Floor, New York, N.Y. 10022 U.S.A.	+1-212-581-2800
◆ Hong Kong	Suite 804, 8/F, Central Plaza, 18 Harbour Road, Wanchai, Hong Kong	+852-2524-5111
◆ Shanghai	Room 1706, Shanghai International Trade Center, 2201 Yan-An Xi Road, Shanghai, China	+86-21-6275-3860
◆ Bangkok	Unit 6, 10th Floor CRC Tower, All Seasons Place, 87/2 Wireless Road, Lumpini, Pathumwan, Bangkok 10330, Thailand	+66-2-654-0588

Others		
■ ●	Head Office and Branch Offices 93 (including 1 overseas branch office)	
■	Sub-branch Offices 3 ▲ Representative Offices 7	
◆	Overseas Representative Offices 3	
Total 106 (including 4 overseas offices)		

