

## Corporate Philosophy Structure

In order to achieve our PURPOSE of

“Supporting the future of companies. Making Japan more resilient to change,”

we have revised our corporate philosophy structure as well as established

“CHUKIN Way” in October 2024, which is the starting point of action and is the set of

values shared with all officers and employees. Compliance based on our Code of Ethics and Compliance Code of Behavior is at the foundation of all that we do.

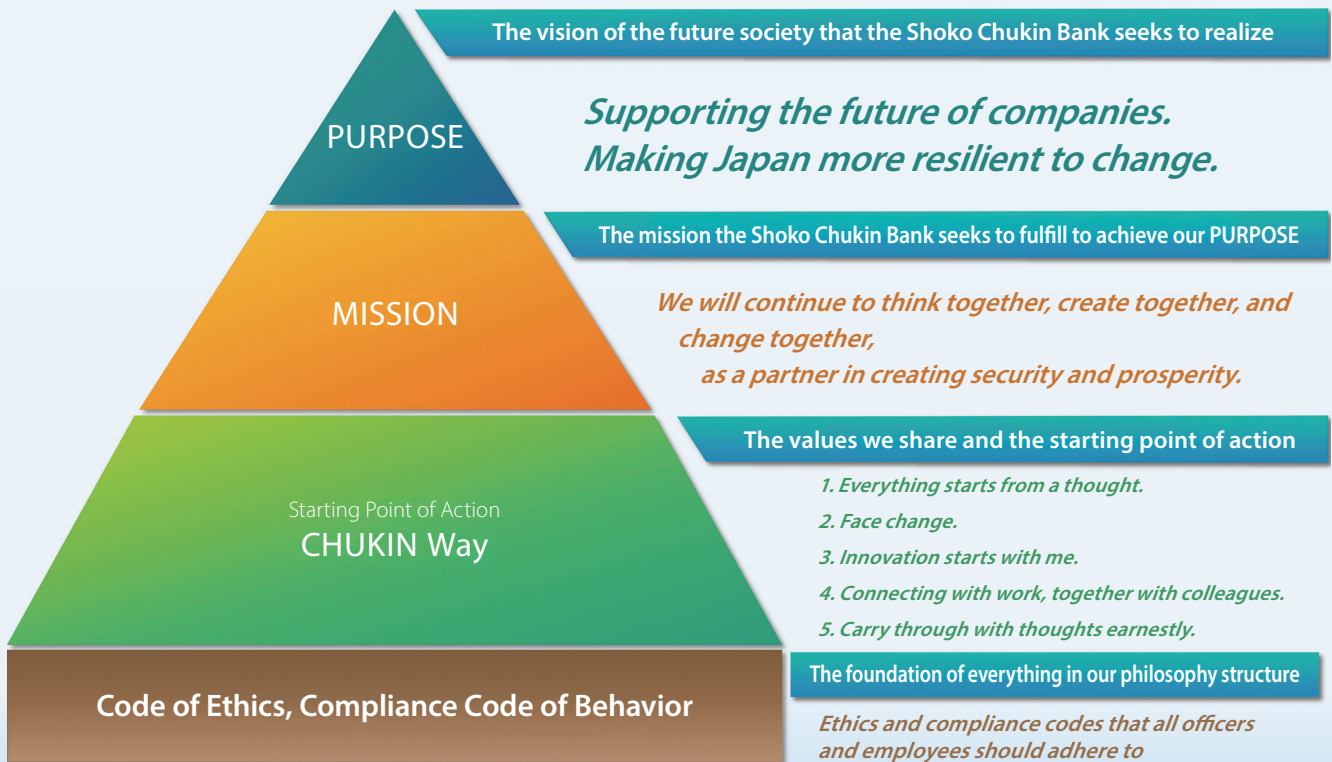
We seek to realize our PURPOSE by pursuing our MISSION based on the CHUKIN Way, the starting point of action.



### Symbol of Shoko Chukin Bank

This symbol expresses the stance of customers and the Shoko Chukin Bank sharing dreams and values, protecting and nurturing each other, and continuing to grow and take on challenges toward the fruition of their dreams and the realization of a prosperous future. The dreams and values that customers and the Shoko Chukin Bank protect and nurture, as well as their fruition, are represented by an orange sphere, while the image of fresh young leaves full of youth, intellect, and energy gently enveloping it conveys the idea of customers and the Shoko Chukin Bank growing together.

<b>CONTENTS</b>	<b>Corporate Philosophy Structure</b> .....	<b>02</b>	<b>Business Strategy for Value Creation</b> .....	<b>34</b>
	<b>Messages from Management</b>		Sustainability Management .....	36
	Message from the CEO .....	04	Improving Productivity of SMEs .....	40
	Message from the CTRo .....	10	Revitalization of Local Economies .....	42
	Message from the Head of Corporate Unit .....	12	Creation of Innovation .....	46
	Roundtable Discussion with External Directors .....	14	Responding to Global Warming and Climate Change...	48
	<b>Value Creation Story</b> .....	<b>18</b>	Diversity, Equity and Inclusion .....	52
	Accumulated Strengths .....	20	Roundtable Discussion with Experienced Hires .....	54
	Value Creation Process .....	22	<b>Management Base Supporting Value Creation</b> .....	<b>56</b>
	Material Issues for Society for the Shoko Chukin Bank to Address (Materiality) .....	24	Human Capital Management .....	58
	Review of the Medium-Term Business Plan and		Digital Transformation (DX) .....	64
	Outline of Long-Term Strategy .....	26	Communication with Stakeholders .....	66
	Areas of Focus for Expanding the SME Economic Sphere ...	28	Governance Structure .....	68
	Financial and Non-financial Highlights .....	30	Directors .....	72
	CHUKIN Way Roundtable Discussion .....	32	Risk Management and Compliance Initiatives .....	76
			10-Year Key Financial Data .....	84
			ESG Information / Corporate Data .....	86
			History of the Shoko Chukin Bank .....	88



#### ■ Editorial policy

The Shoko Chukin Bank, Ltd. has prepared the Integrated Report 2025 to provide shareholders, institutional investors, and all other stakeholders with an easy-to-understand description of the Bank's business activities and efforts to enhance corporate value, and to initiate constructive dialogue. This report was compiled with reference to various guidelines such as the International Integrated Reporting Framework issued by the International Integrated Reporting Council (IIRC) and the Guidance for Integrated Corporate Disclosure and Company-Investor Dialogue for Collaborative Value Creation issued by the Ministry of Economy, Trade and Industry. We hope that this report will help deepen your understanding of the Bank.

Please refer to the Disclosure Publication 2025 issued in July 2025 for the disclosure publication (explanatory documents relating to the status of operations and assets) in accordance with Article 53 of the Shoko Chukin Bank Limited Act.

◆ **Scope of this Report**    Period: From April 1, 2024 to March 31, 2025 (some information from after April 2025 is included)  
    Scope: The Shoko Chukin Bank, its subsidiaries and associated companies

◆ **Published in**    November 2025

▶ **The Shoko Chukin Bank website**

<https://www.shokochukin.co.jp/>



▶ **YouTube Shoko Chukin Official Channel**

<https://www.youtube.com/channel/UCngWuivSeQ4HXYzYFhS-8FA>  
 Provides videos featuring support case examples and service offerings.

